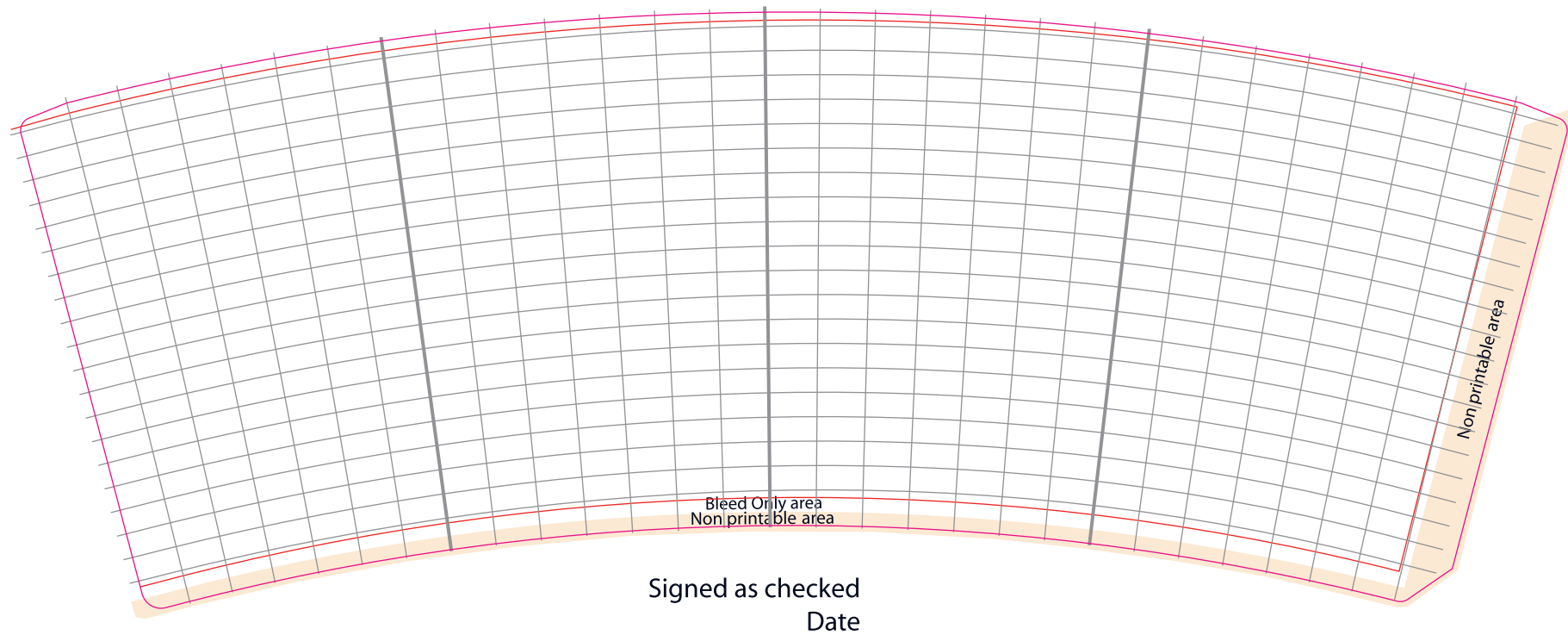


Rotate repeat jobs 0.75 clockwise & align to black line on Non Print Layer, on far right.

Make sure elements match the grid.

Make sure bleed is correct.



### Dubbelwandige beker 200cc-8oz (DW)

NOTE: Artwork in between the red lines will be visible. Please add 3mm bleed to all sides beyond the keyline. Only layers of "Keyline" and "Artwork" should be written within your pfd for print.